

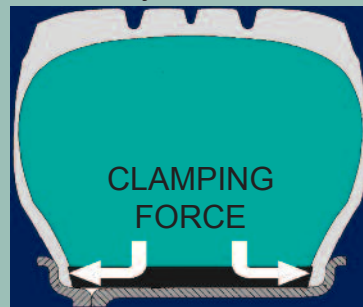
LIKE NO OTHER WHEEL!

Hutchinson Rock Monster® wheels are the only TRUE two piece wheels you'll likely see on the trail.

DESIGN MATTERS!

Hutchinson Rock Monster® two piece beadlock rims gently and evenly lock your two tire beads against the wheel using our internal rubber beadlock insert. The tire beads are supported by a wheel profile that complies with DOT, rather than relying on a modified wheel profile that violates DOT requirements, and may cause unpredictable tire performance. It's why Rock Monster® wheels have the only legal method of locking beads, and that's why they bear the "DOT" stamp.

- Load ratings up to 2900 lb
- Street Legal
- Internal Dual beadlock

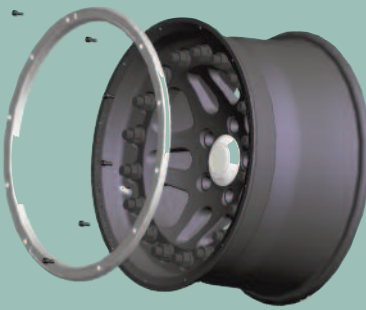


HARDWARE MATTERS!

Compare Rock Monster® hardware to other "beadlock wheels". Rock Monsters use unique locking assembly nuts that resist loosening due to vibration and maintain clamp load consistently, each time they're torqued.

- Locking assembly nuts for enhanced safety and Rock Monster® looks
- Easy to spin on and off
- Grade 8 hardware
- Corrosion resistant

And new for 2010, selected wheel models are available with our new Rock Rings. Rock Rings are protective rings, that protect the flange area of your new wheels from the extremes of rock crawling. Molded of a special composite developed to resist abrasion and impact, these rings protect the look of your new rims - available in a variety of colors to complement your rig. Ask your Rock Monster® dealer about Rock Rings for your wheel model.



ROCK MONSTER® WHEELS

2-piece aluminum rims with Dual Internal Beadlock protection

DISTRIBUTORS WANTED!
PLEASE INQUIRE



Unparalleled

traction and safety for every off-road adventure — in a design that's DOT-COMPLIANT.

- Increase vehicle mobility and maneuverability
- No special tools required for Installation
- Seals in low-pressure air and keeps out all foreign materials like dirt, sand and water.

HUTCHINSON SNC
European Headquarters
Phone: +33 (0)1 39 37 42 97
sales@hutchinson.fr

HUTCHINSON INDUSTRIES INC
North American Headquarters
Phone: +1 609 394 10 10
sales@hutchinsoninc.com

THEY'RE

STREET LEGAL & ROCK HUNGRY
www.RockMonsterWheels.com



DEUTSCHE HUTCHINSON GMBH - Germany
Hansastr.66
D-68169 MANNHEIM
Phone: +49 621 39 71 302 - Fax: +49 (0) 621 3971 406
d.hutchinson@hutchinson.de

HUTCHINSON UK
Phone: +44 (0)1952 677749 - Fax: +44 (0)1952 608498

HUTCHINSON SRL - Italy
Phone: + 39 02 93474192 - Fax: +39 02 93474178

ROCK MONSTER® WHEELS



STREET LEGAL & ROCK HUNGRY

HUTCHINSON INDUSTRIES
BRINGS YOU THE ULTIMATE
OFF-ROAD WHEEL.

EASY TO INSTALL
D.O.T. COMPLIANT

AIR DOWN TO IMPOSSIBLY LOW AIR
PRESSURES FOR ENHANCED PERFORMANCE
AND TRACTION ON ROCK, SAND, MUD & SNOW.

EXTREME
ADVENTURE

FOR MORE INFORMATION ABOUT OUR PRODUCTS
PLEASE CALL 609.394.1010, OR VISIT
WWW.ROCKMONSTERWHEELS.COM



PRODUCT CATALOG

TRUE DUAL
INTERNAL
BEADLOCK
DESIGN



Exploded view
Rock Monster® wheel assembly

JEEP

P/N WA-0398

SPECS

size 15 x 8.0"
bolt pattern 5H - 4.5" BCD
lug style ½" 60° conical nut
hub bore diameter 2.89" (73.4 mm)
SAE rated load 2,300 lbs. - 35 psi
backspacing 3.63" (92.2 mm)
construction Cast aluminum alloy
**snap-in hub cover included*

1997 - 2006
Wrangler TJ

JEEP

P/N WA-0566

SPECS

size 17 x 8.5"
bolt pattern 5H - 5.5" BCD
lug style ½" 60° conical nut
hub bore diameter 4.17" (106.0 mm)
SAE rated load 2,300 lbs. - 60 psi
backspacing 4.63" (117.6 mm)
construction Cast aluminum alloy
**pull through chrome hub cover included*

1955 - 1985
CJ

1999 - 2006
Defender

P/N WA-0604

SPECS

size 16 x 7.0"
bolt pattern 5H - 165.1 mm BCD
lug style M16 shank nut (hub piloted)
hub bore diameter 4.44" (112.8 mm)
SAE rated load 3,415 lbs. - 80 psi
backspacing 4.89" (124.3 mm)
construction Cast aluminum alloy

LAND ROVER

TOYOTA

P/N WA-0550

SPECS

size 17 x 8.5"
bolt pattern 5H - 150 mm BCD
lug style M14 shank nut (hub-piloted)
hub bore diameter 4.34" (110.1 mm)
SAE rated load 3,200 lbs. - 60 psi
backspacing 5.81" (147.6 mm)
construction Cast aluminum alloy

1999 - 2007
Land Cruiser
Tundra

Wheel accepts OE hub cover (not shown):
Toyota P/N 42603-60590

TOYOTA

P/N WA-0567

SPECS

size 17 x 8.5"
bolt pattern 6H - 139.7 mm BCD
lug style M12 shank nut (hub-piloted)
hub bore diameter 4.19" (106.4 mm)
SAE rated load 2,750 lbs. - 60 psi
backspacing 4.51" (114.5 mm)
construction Cast aluminum alloy
**snap-in hub cover included*

FIT LIST

Make	Model	Year
Toyota	Tundra	1999 - 2006
	4-Runner	1986 - 2009
Tacoma	4WD	1995 - 2009
	Prerunner	1995 - 2003
Sequoia		2000 - 2009
Land Cruiser		1969 - 1992
FJ Cruiser		2007 - 2009
T100		1993 - 1998

FORD

P/N WA-1249

SPECS

size 17 x 8.5"
bolt pattern 8H - 170 mm BCD
lug style M14 flange nut (hub-piloted)
hub bore diameter 4.93" (125.3 mm)
SAE rated load 2,900 lbs. - 60 psi
backspacing 4.50" (114.4 mm)
construction Cast aluminum alloy
**snap-in hub cover included*

FIT LIST

Make	Model	Year
Ford	Excursion	2000 - 2005
	F250	HD/SD 2000 - 2004
	F350	HD/SD SRW 1999 - 2009

GM Light Trucks

P/N WA-0565

SPECS

size 17 x 8.5"
bolt pattern 6H - 5.5" BCD
lug style M14 60° conical nut
hub bore diameter 3.06" (77.8 mm)
SAE rated load 2,750 lbs. - 60 psi
backspacing 4.51" (114.5 mm)
construction Cast aluminum alloy
**snap-in hub cover included*

FIT LIST

Make	Model	Year
GMC	Sierra	1500 1999 - 2009
		2500 1999 - 2009
	Yukon	4WD 1997 - 1999
Chevy	C/K	1500 4WD 1988 - 1998
	Tahoe	2WD 1999 - 2006
		4WD 1992 - 2000
	Suburban	2WD 2000 - 2006
		4WD 1992 - 2006
Silverado	1500	1999 - 2006
	2500	1999 - 2006
Avalanche		2002 - 2006
C/K	1500 4WD	1988 - 1998

GM Light Trucks

P/N WA-1251

SPECS

size 17 x 8.5"
bolt pattern 8H - 6.5" BCD
lug style M14 60° conical nut
hub bore diameter 4.63" (117.5 mm)
SAE rated load 2,900 lbs. - 60 psi
backspacing 4.50" (114.4 mm)
construction Cast aluminum alloy
**snap-in hub cover included*

FIT LIST

Make	Model	Year
GMC	Sierra	1500 HD 2003 - 2006
		2500 HD 2001 - 2006
		3500 2003 - 2006
Hummer	Hummer H2	2003 - 2006
Chevy	Silverado	2500 HD 1999 - 2006
		3500 SRW 1999 - 2006
	Suburban	2500 HD 2000 - 2006
	Avalanche	2500 4WD 2002 - 2006

DODGE

P/N WA-1174

SPECS

size 17 x 8.5"
bolt pattern 8H - 6.5" BCD
lug style 9/16" 60° conical nut
hub bore diameter 4.77" (121.3 mm)
SAE rated load 2,900 lbs. - 60 psi
backspacing 4.50" (114.4 mm)
construction Cast aluminum alloy
**snap-in hub cover included*

FIT LIST

Make	Model	Year
Dodge	Power Wagon	2005 - 2009
	Ram 2500	1994 - 2009
	Ram 3500	1994 - 2009

For fit list updates, more information about our products and a complete listing of our distributors, please visit www.rockmonsterwheels.com.